



# Aluminum



## Aluminum SFS

Our heavy duty aluminum Structural Framing System (SFS) is a simple method of designing and building frames and enclosures to special size and strength requirements. This unique AMCO Enclosures system provides a selection of 14 aluminum extrusions (1.50" OD) and 8 types of corner castings (0.125" wall thickness). The flanges in the extrusions accommodate .625" formed panels and .125" flat panels (made upon request). The system accepts locking clips (provided standard) for permanent designs or non-locking clips (optional) for prototypes or planned disassembly. When reinforced with bolt-on gussets, SFS assemblies can meet MIL-STD-167-1 shock and vibration requirements.

### Ordering Information:

The SFS can be ordered in the following ways to meet your current and future requirements:

- Completely assembled and shipped ready-to-load
- In pre-configured or cut-to-size kits; assembly required
- As bulk material; castings and extrusions you can stock, cut and modify yourself based on per project requirements



**Aluminum Gusset with Hardware**  
ALG



**Locking Clips**  
ALC-S



**Non-Locking Clips**  
ALC-SN



**Pins**  
H264

## Aluminum Castings (Material: 356-T6 aluminum per ASTM B108)

Castings are furnished with locking clips for assembly to extrusions. Special services available include: machining, hardware installation, marking and packaging.



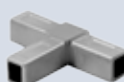
**ALC-1**  
Three corner casting



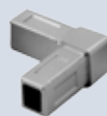
**ALC-2**  
Four ear corner, joining or foot casting



**ALC-3**  
0° to 120° hinged casting



**ALC-4**  
Three ear corner casting



**ALC-5**  
Two ear corner casting



**ALC-6**  
Five ear corner casting

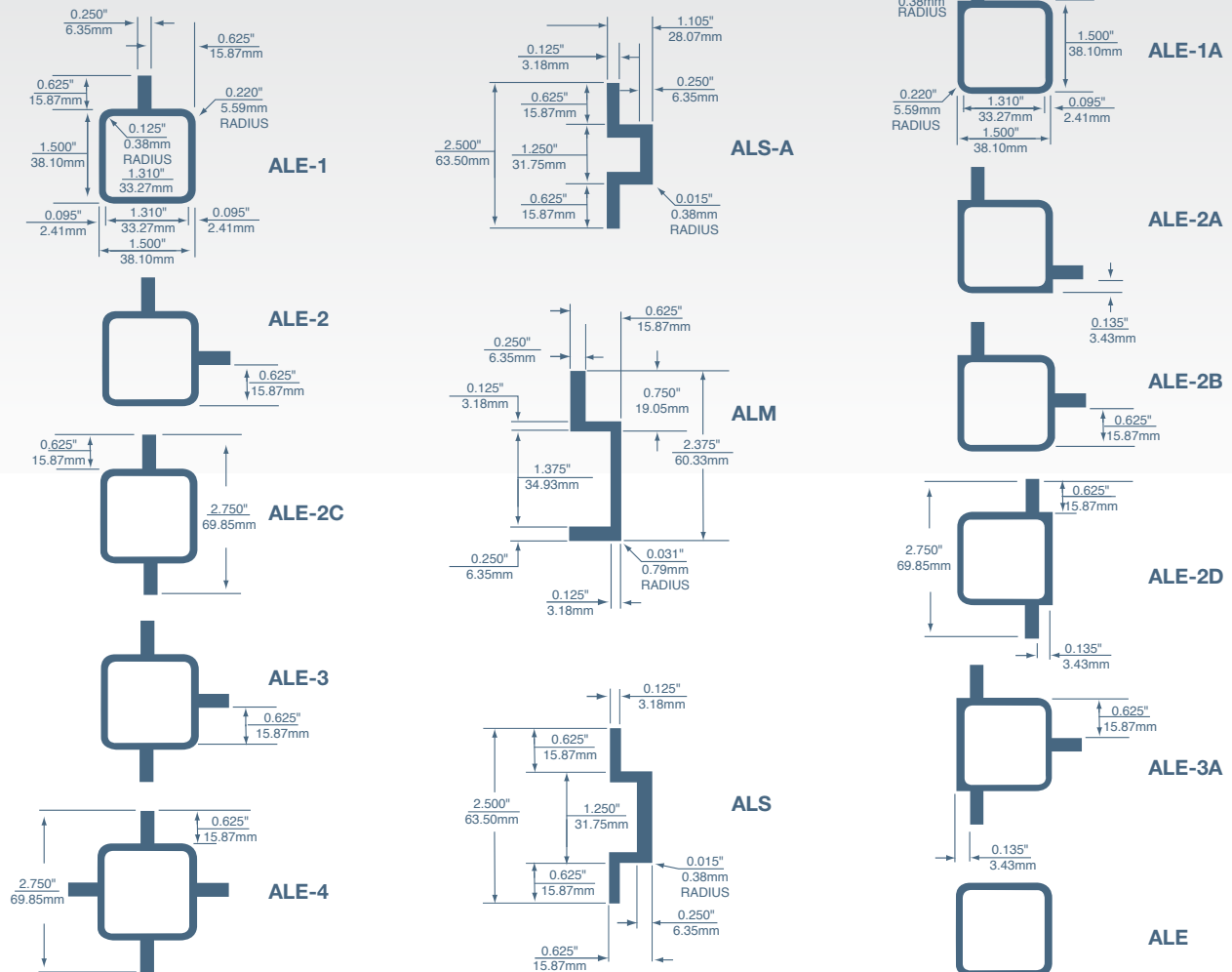


**ALC-7**  
Four ear (cross) joining casting "X"



**ALC-8**  
Six ear joining casting

# SFS Extrusion Profiles



## SFS Extrusion Profiles (Material: 6061-T6 aluminum per ASTM B221)

Maximum extrusion length is 10'. Extrusions are supplied without mounting holes. Extrusions will be pre-cut to length and mitered to 90° angles at no additional cost.

### For Flush Mounting 1/8" (3.18mm) Flat Panels

- ALE-1A** Single flange for corner members 1/8" (3.18mm) flat panel.
- ALE-2A** Double flange for corner members 1/8" (3.18mm) flat panel.
- ALE-2B** Double flange, corner member for 1/8" (3.18mm) flat panel combination flush and recessed.
- ALE-2D** Double flange provides joining member for a series of panels.
- ALE-3A** Triple flange provides joining member for a series of panels.
- ALE** No flanges.

### For Flush Mounting 5/8" (15.87mm) Formed Panels or Recessing 1/8" (3.18mm) Flat Panels

- ALE-1** Single flange used as corner member flush 5/8" (15.87mm) or recessed 1/8" (3.18mm) panels.
- ALE-2** Double flange used as corner member flush 5/8" (15.87mm) or recessed 1/8" (3.18mm) panels.
- ALE-2C** Double flange provides joining member for series mounting-flushing 5/8" (15.87mm).
- ALE-3** Triple flange provides joining member for series mounting flush 5/8" (15.87mm) or recessed 1/8" (3.18mm) panels.
- ALE-4** Quad flange provides center support joining member for internal series mounting flush 5/8" (15.87mm) or recessed 1/8" (3.18mm) panels.

### Accessory Mounting Channels

- ALS-A** Horizontal support member used with ALE-1A, -2A, -2B and -3A series frame members for mounting ALM.
- ALM** Vertical adjustable recessed panel mounting channel.
- ALS** Horizontal support member used with ALE-1, -2 and -3 series frame members for mounting ALM.

*Note: Dimensions noted above are for reference only.*