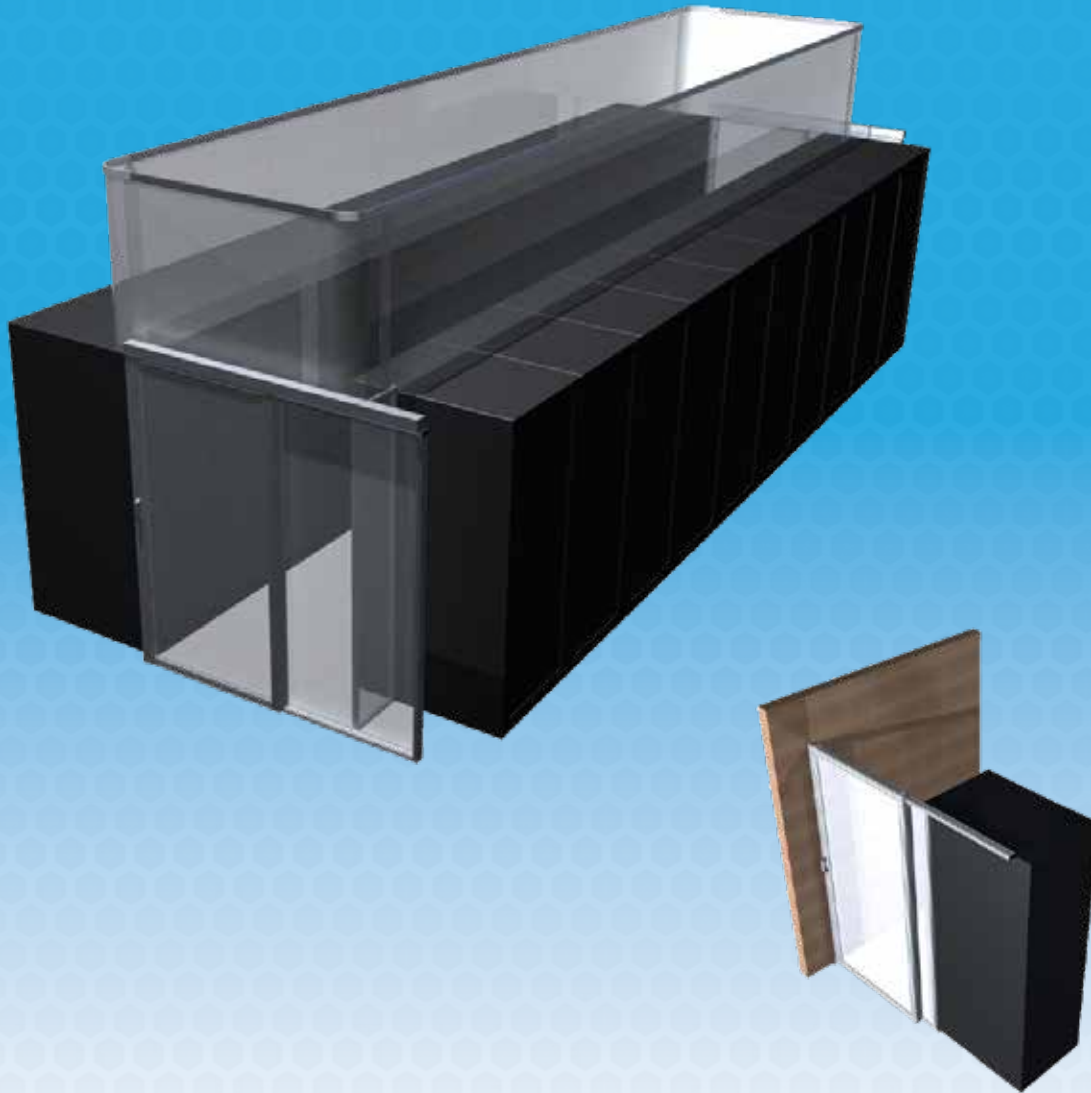


# Single Sliding Door

*Auto Closing*



## Standard Features

- Ordered to size for precise fit
- Smooth operation under high air pressure
- No threshold design
- Soft close auto closing door
- Sturdy aluminum frame
- Hold-Open feature

## Door Options

- Clear/Black Anodize
- Aluminum Handle
- Digital/key Lock
- Free Standing
- Custom Colors
- Other Customizations

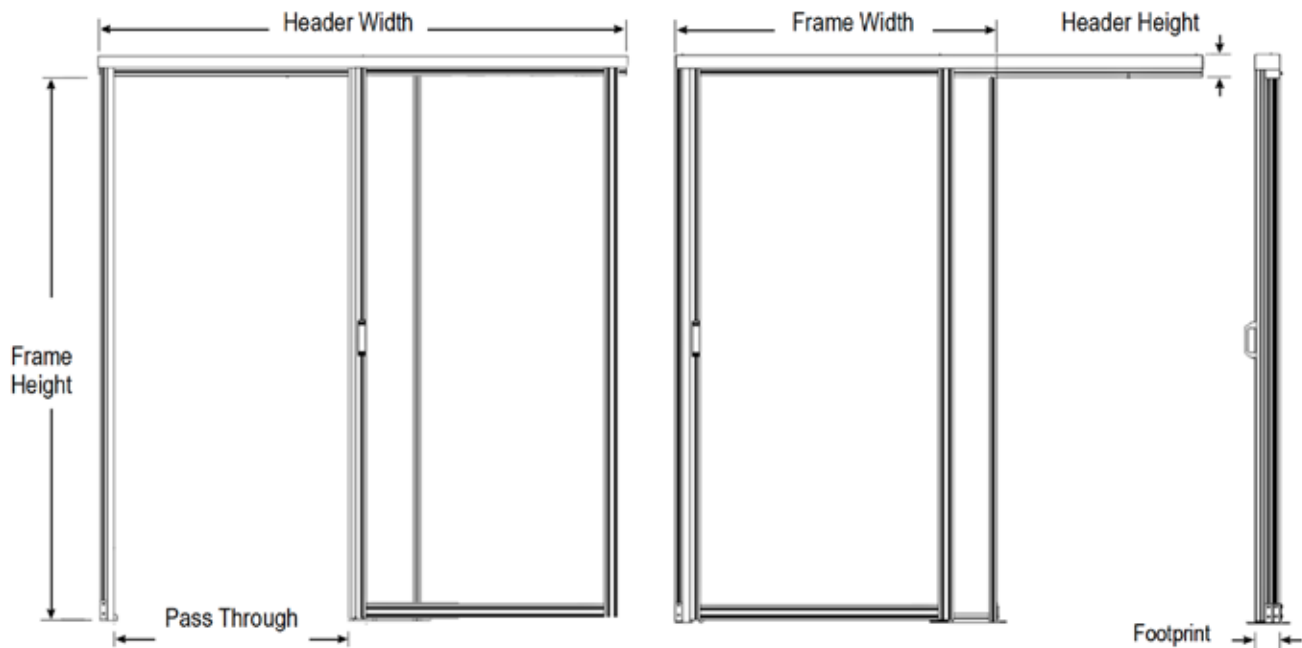


# Technical Data: Single Sliding Door with Auto Closer

## Standard Specifications

Size and Finish		Panel Options	Test	Result
Frame Height *	Up to 98"	3 mm Polycarbonate	ASTM E-84	Class B
Frame Width *	Up to 80"		ASTM D635	CC1
Header Width	80 <sup>1/8</sup> "		ASTM D2843	<75
Pass Through Width	34 <sup>3/4</sup> "	4.5 mm Polycarbonate	UL 94	V-0
Footprint	3 <sup>5/8</sup> "		ASTM D635	CC1
Header Height	3 <sup>11/16</sup> "		ASTM D2843	Passed
Total Door Height = Frame Height + Header Height		3 mm Clear PVC	UL 94	V-0
<b>Door &amp; Frame</b>			ASTM E-84	Class A
Material	6560 T-6 Temper Aluminum			
Tensile Strength	30,000 psi			

\* Specify size when ordering



### Measurements Needed

1. Frame Height - Measurement from ground to bottom of Header. Match Frame Height to height of cabinets. Door header will be positioned above the cabinets, ensure that there is clearance.
2. Frame Width - Measurement from frame edge to frame edge. Make Frame Width at least 2.5" wider than aisle width to ensure aisle is fully contained.

