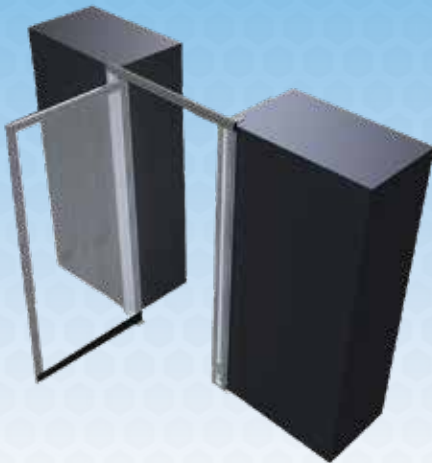
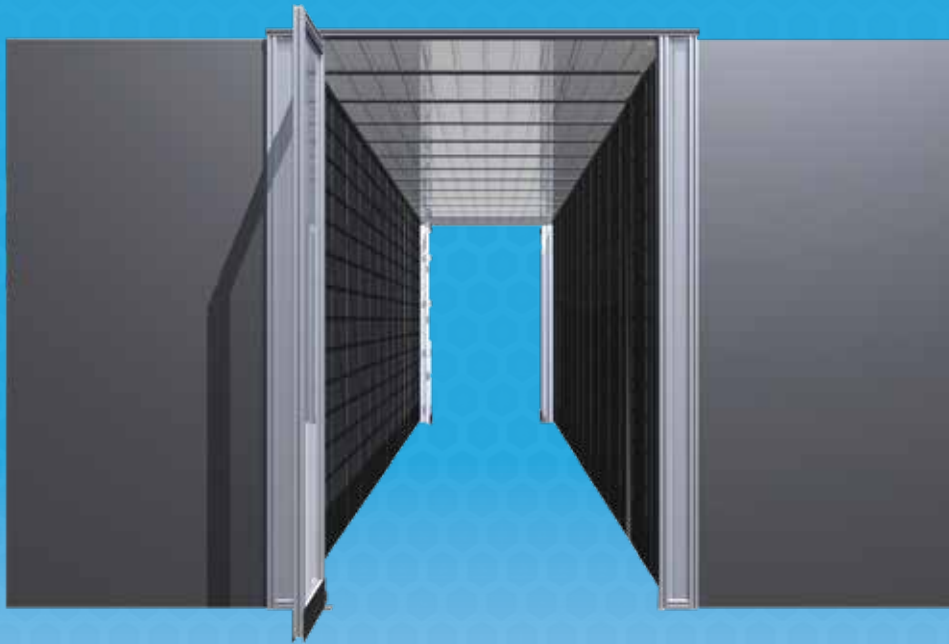


# Single Pivot Door



## Standard Features

- Ordered to size for precise fit
- No threshold design
- Double acting closer with adjustable tension
- Sturdy aluminum frame
- Doors hold open at 85°

## Door Options

- Clear/Black Anodize
- Bottom Kick Plate
- Aluminum Handle
- Free Standing
- Custom Colors
- Other Customizations

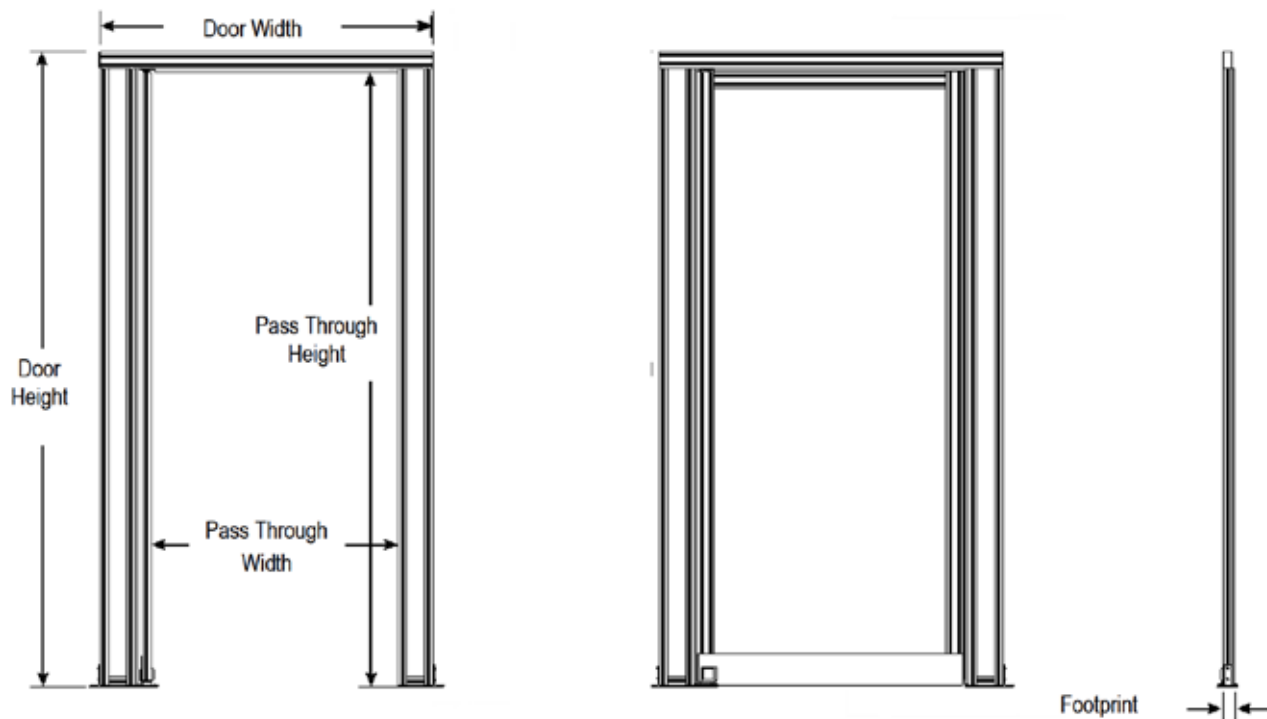


# Technical Data: Single Pivot Door

## Standard Specifications

| Size and Finish         |                          | Panel Options        | Test       | Result  |
|-------------------------|--------------------------|----------------------|------------|---------|
| Door Height *           | Up to 98"                | 3 mm Polycarbonate   | ASTM E-84  | Class B |
| Door Width *            | Up to 80"                |                      | ASTM D635  | CC1     |
| Pass Through Width      | Up to 34"                |                      | ASTM D2843 | <75     |
| Footprint               | 1 3/16"                  | 4.5 mm Polycarbonate | UL 94      | V-0     |
| <b>Door &amp; Frame</b> |                          |                      | ASTM D635  | CC1     |
| Material                | 6560 T-6 Temper Aluminum | 3 mm Clear PVC       | ASTM D2843 | Passed  |
| Tensile Strength        | 30,000 psi               |                      | UL 94      | V-0     |
|                         |                          |                      | ASTM E-84  | Class A |

\* Specify size when ordering



### Measurements Needed

1. Door Height - Measurement from ground to top of door. Typically top of door will be sized 1.1875" taller than the cabinets for integration with overhead containment.
2. Door Width - Measurement from frame edge to frame edge. Make frame width at least 2.5" wider than aisle width to ensure aisle is fully contained.