

Titan ZN4 - Electronics Packaging



Titan ZN4 Electronic Packaging cabinet has been engineered, tested and certified to GR-63-CORE, for electronic packaging equipment that might be considered Mission Critical and have a high risk of exposure to seismic events and ground vibrations. Available in open or closed configurations, ZN4 racks can be complimented with a full line of accessories to expand your racks capabilities.

Specifications:

- Certified to Telcordia Specification NEBS GR-63-CORE, Issue 4
- EIA Standard 310D
- Seismic load rating of 1,200 lbs.
- UL Listed
- ISO9001 Certified
- Fully welded steel construction
- Floor mounting hardware (Hilti) available
- Tested and approved for seismic events up to 8.3 magnitude
- Full line of accessories for Electronics Packaging
- Enhanced base, additional diagonal struts, gussets and seam welding
- Top and base are open for cable management options
- 4 weld studs for Grounding
- Ten year warranty
- Custom sizes and designs available with AMCO's in house design team

24" Width Frames

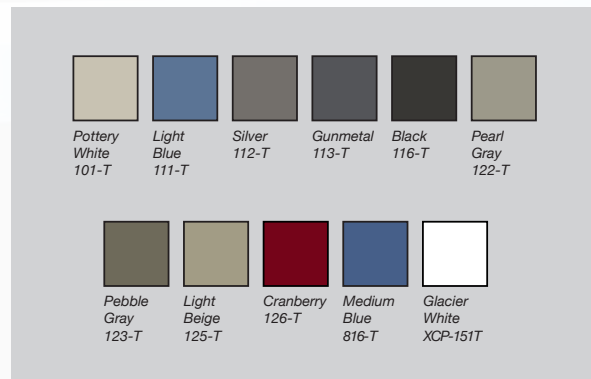
RU Height	36" Depth
45	R-Z4-45U24-36
40	R-Z4-40U24-36
35	R-Z4-35U24-36

RU Height	30" Depth
45	R-Z4-45U24-30
40	R-Z4-40U24-30
35	R-Z4-35U24-30

RU Height	25.5" Depth
45	R-Z4-45U24-255
40	R-Z4-40U24-255
35	R-Z4-35U24-255

Note: Mounting channels not included.

Cabinet Color Options:



AMCO Enclosures offers standard color choices (up to 2 per console) for no extra charge. Custom colors are available and quoted upon request.



Doors

Titan EP doors are available as either face or flush mount. Face mount doors mount on the exterior of the frame. Flush mount doors mount flush to the frame.

- Concealed hinges offer easy on/off release
- Doors can be used as either left-hand or right-hand
- Vented doors feature a 77% open airflow pattern, exceeding major equipment vendor requirements

- Swing handles with keyed locks
- Combination swing handle locks optional
- Locks can be ordered keyed alike or separately (keyed separately option quoted upon request)
- Doors are available in solid, smoked polycarbonate, vented and louvered

Titan ZN4 - Electronics Packaging



Side Panel



Louvered Side Panel

Side Panels

- Side panels come with one keyed lock (36" depth side panel has two locks)
- Side panel latches provide easy on/off mechanism (latches not included on 12RU-24RU panel sizes)
- Side panels can be mounted between cabinets when bayed together
- Side panels can be bolted from within the rack for permanent mounting



MX Mounting Channels



MX Mounting Channels - Tapped

Mounting Channels

- Mounting channels are fully adjustable front to rear within the enclosure.
- Clear zinc finish and your choice of either M6 (square) or #10-32 (tapped) holes with individually numbered RUs for each rack



Solid w/o Cable Egress Ports



Vented

Top Panels

Cable egress ports include dust covers to close off the top when the ports are not in use.

Solid without Cable Egress Ports

- One-piece, solid-plate construction seats flat within the top of the rack

Vented

- One-piece construction featuring vented section of .187" x .937" slots

Solid with Cable Egress Ports

- One-piece, solid-plate construction seats within the top of the rack with cable egress ports



Solid



BTA6 Fan



BTA10 Fan

BTA6 Fan

- Top panel includes two BTA6 fans with 300 CFM per fan, 6' power cord and external finger guards

BTA10 Fan

- Top panel includes one BTA10 fan with 665 CFM, 6' power cord and external finger guards

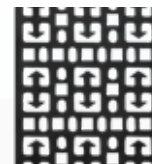


Horizontal Cable Manager

- HCM Panels have a 2RU panel height (3.50") and feature 10 ga. steel construction. Available in 4" and 7" depths.



Adjustable Cable Lacing Strip 1RU & 2RU



Vertical Cable Lacing Strip (5" Width)

Cable Lacing Strips

- Cable lacing strips have a combination of M6 holes for cable ring mounting (HK-CR1) or equipment tie down, while the slots can accept cable ties, fasteners, etc. Lacing strips are sold individually.
- Vertical cable lacing strips provide mounting support for PDUs and cabling



M6 HKM6-25



Joining Kit HK-R-TN

Hardware Kits

Each rack ships with 50 ea. HKM6 inserts and screws.

Square Hole Mounting Hardware Kits

- HKM6-25 or -50 M6 hardware for equipment mounting. Includes 25 or 50 M6 mounted screws.

Frame-Joining Hardware

- HK-R-TN- Frame-joining kit (8 pieces)



Hardware Kit T441

10-32 Tapped Hole Mounting Hardware Kits

- T441- (25) 10-32 X 1/2 black phillips pan head screw w/ washer

Casters

- Light Duty Caster-175 lbs. load rating (adds 1" to overall frame height)
- Heavy Duty Caster -1,200 lbs. load rating (adds 1.75" to overall frame height)



Light Duty Caster CA-C175



Heavy Duty Caster CA-C1200