

Titan EP Electronic Packaging Rack



Titan EP racks provide the industry's highest load ratings for your electronics packaging by utilizing multi-formed channels, a fully welded frame and side uni-struts.

Specifications:

- Static load rating of 5,400 lbs.
- Dynamic load rating of 3,300 lbs.
- MIL STD 901D Shock
- MIL STD 810E Vibration
- UL Listed
- ISO9001 Compliant
- RoHS Compliant
- Individually numbered RUs
- Four weld studs in each caster base for grounding
- Four 1,000 lb. leg levelers for ground support
- Joining hardware kit
- Full line of accessories available
- Ten year warranty
- STEP files available per request
- Custom sizes and designs available with AMCO's in house design team

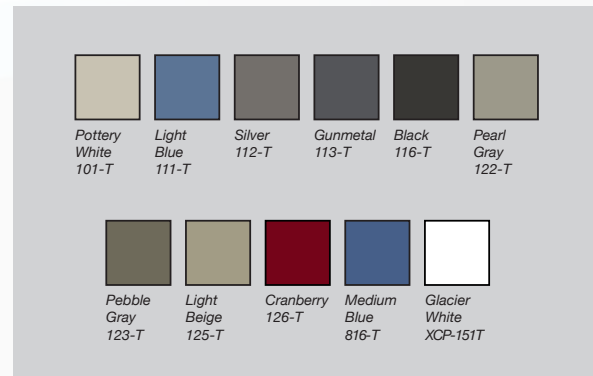
24" Width Frames

RU Height	25.5" Depth	30" Depth	36" Depth
45	R-TN-45U24-255	R-TN-45U24-30	R-TN-45U24-36
40	R-TN-40U24-255	R-TN-40U24-30	R-TN-40U24-36
35	R-TN-35U24-255	R-TN-35U24-30	R-TN-35U24-36
Sizes Below Available - Contact AMCO Direct for Pricing & Lead Times			
30	R-TN-30U24-255	R-TN-30U24-30	R-TN-30U24-36
24	R-TN-24U24-255	R-TN-24U24-30	R-TN-24U24-36
18	R-TN-18U24-255	R-TN-18U24-30	R-TN-18U24-36
12	R-TN-12U24-255	R-TN-12U24-30	R-TN-12U24-36

Note: For 29" width, change 24 to 29 in part number.
(i.e. R-TN45U24-25 becomes R-TN45U29-25)

For size 29W, contact AMCO Direct for Pricing & Lead Times

Cabinet Color Options:



AMCO Enclosures offers standard color choices (up to 2 per console) for no extra charge. Custom colors are available and quoted upon request.



Curved-Face

Square-Face

Flush

Doors

Titan EP doors are available as either face or flush mount. Face mount doors mount on the exterior of the frame. Flush mount doors mount flush to the frame.

- Concealed hinges offer easy on/off release
- Doors can be used as either left-hand or right-hand
- Vented doors feature a 77% open airflow pattern, exceeding major equipment vendor requirements

- Swing handles with keyed locks
- Combination swing handle locks optional
- Locks can be ordered keyed alike or separately (keyed separately option quoted upon request)
- Doors are available in solid, smoked polycarbonate, vented and louvered

Titan EP Electronic Packaging Rack



Side Panel



Louvered Side Panel

Side Panels

- Side panels come with one keyed lock (36" depth side panel has two locks)
- Side panel latches provide easy on/off mechanism (latches not included on 12RU-24RU panel sizes)
- Side panels can be mounted between cabinets when bayed together
- Side panels can be bolted from within the rack for permanent mounting



Solid w/o Cable Egress Ports



Vented



Solid



BTA6 Fan



BTA10 Fan

Top Panels

Cable egress ports include dust covers to close off the top when the ports are not in use.

Solid without Cable Egress Ports

- One-piece, solid-plate construction seats flat within the top of the rack

Vented

- One-piece construction featuring vented section of .187" x .937" slots

Solid with Cable Egress Ports

- One-piece, solid-plate construction seats within the top of the rack with cable egress ports

BTA6 Fan

- Top panel includes two BTA6 fans with 300 CFM per fan, 6' power cord and external finger guards

BTA10 Fan

- Top panel includes one BTA10 fan with 665 CFM, 6' power cord and external finger guards

Casters

- **Light Duty Caster**-175 lbs. load rating (adds 1" to overall frame height)
- **Heavy Duty Caster** -1,200 lbs. load rating (adds 1.75" to overall frame height)



Light Duty Caster
CA-C175



Heavy Duty Caster
CA-C1200

M6 (Square) Holes



MCX Profile



MCW Profile Reducer

Tapped Holes



MCX Profile



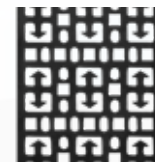
MCW Profile Reducer

Mounting Channels

- **MCX profile** features standard 19" mounting in 24" overall frame widths.
- **MCW profile reducer** features 19" mounting in 24" panel opening space for 29" overall frame width. There is an additional 2.5" on either side of the mounted equipment for cable or power management.
- Mounting channels are fully adjustable front to rear within the enclosure.
- Clear zinc finish and your choice of either M6 (square) or #10-32 (tapped) holes with individually numbered RUs for each rack



Adjustable Cable Lacing Strip 1RU & 2RU



Vertical Cable Lacing Strip (5" Width)

Cable Lacing Strips

- Cable lacing strips have a combination of M6 holes for cable ring mounting (HK-CR1) or equipment tie down, while the slots can accept cable ties, fasteners, etc. Lacing strips are sold individually.
- Vertical cable lacing strips provide mounting support for PDUs and cabling

Hardware Kits

Each rack ships with 50 ea. HKM6 inserts and screws.

Square Hole Mounting Hardware Kits

- **HKM6-25** or -50 M6 hardware for equipment mounting. Includes 25 or 50 M6 mounted screws.

Frame-Joining Hardware

- **HK-R-TN**- Frame-joining kit (8 pieces)

10-32 Tapped Hole Mounting Hardware Kits

- **T441**- (25) 10-32 X 1/2 black phillips pan head screw w/ washer



M6
HKM6-25



Joining Kit
HK-R-TN



Hardware Kit
T441