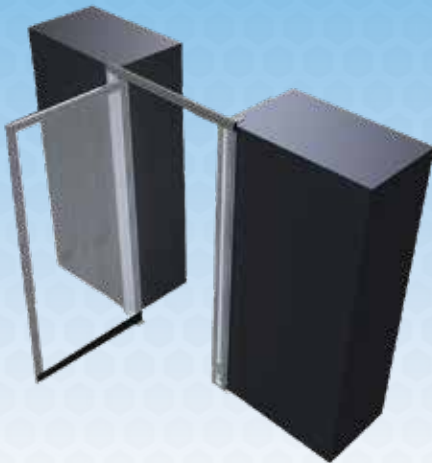
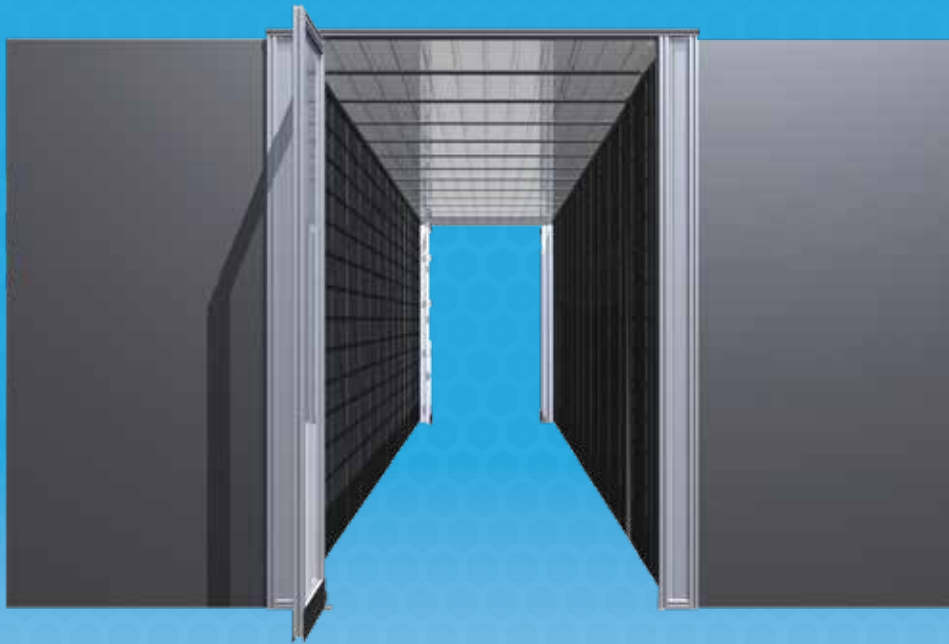


# Single Pivot Door



## Standard Features

- Ordered to size for precise fit
- No threshold design
- Double acting closer with adjustable tension
- Sturdy aluminum frame
- Doors hold open at 85°

## Door Options

- Clear/Black Anodize
- Bottom Kick Plate
- Aluminum Handle
- Free Standing
- Custom Colors
- Other Customizations

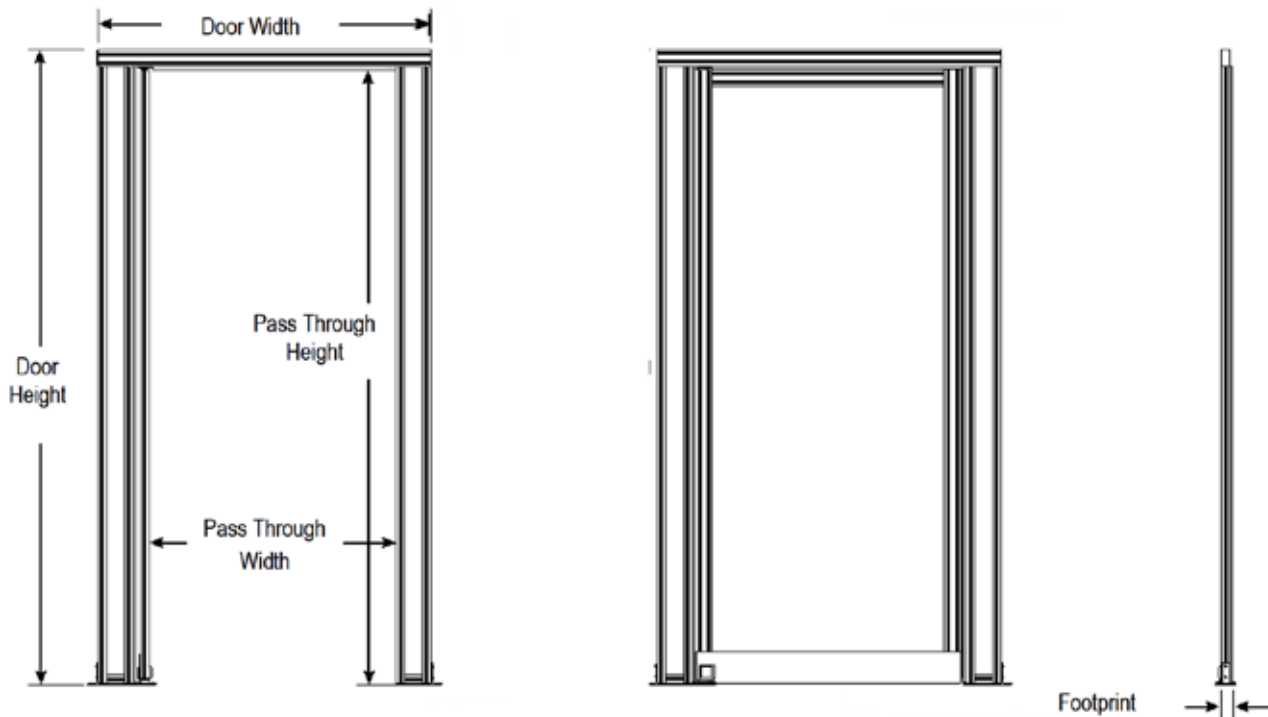


# Technical Data: Single Pivot Door

## Standard Specifications

Size and Finish		Panel Options	Test	Result
Door Height *	Up to 98"	3 mm Polycarbonate	ASTM E-84	Class B
Door Width *	Up to 80"		ASTM D635	CC1
Pass Through Width	Up to 34"		ASTM D2843	<75
Footprint	1 3/16"	4.5 mm Polycarbonate	UL 94	V-0
<b>Door &amp; Frame</b>			ASTM D635	CC1
Material	6560 T-6 Temper Aluminum	3 mm Clear PVC	ASTM D2843	Passed
Tensile Strength	30,000 psi		FM 4910	Passed
			UL 94	V-0
			ASTM E-84	Class A

\* Specify size when ordering



### Measurements Needed

1. Door Height - Measurement from ground to top of door. Typically top of door will be sized 1.1875" taller than the cabinets for integration with overhead containment.
2. Door Width - Measurement from frame edge to frame edge. Make frame width at least 2.5" wider than aisle width to ensure aisle is fully contained.

