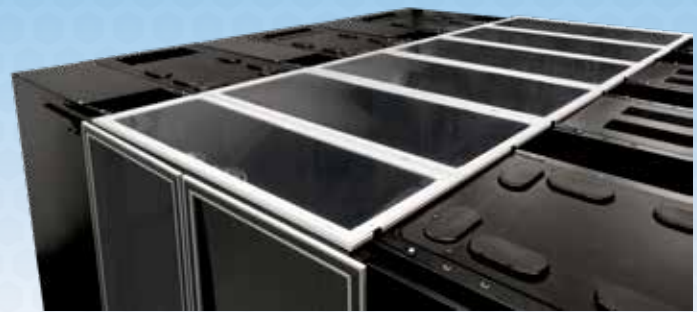
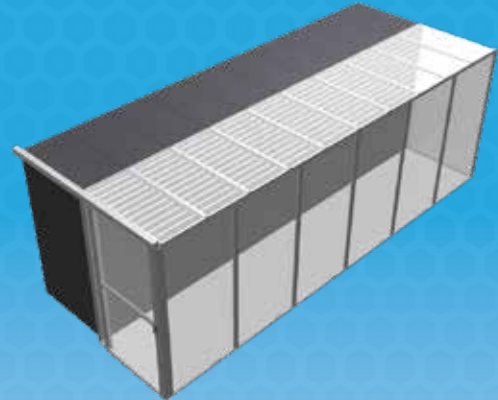
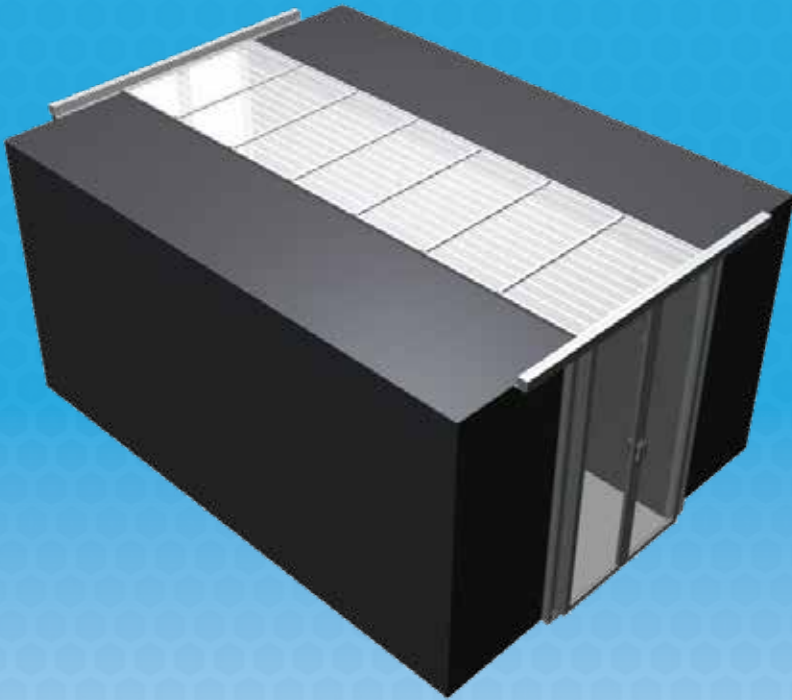


# Ceiling Panels

*Heat Activated*



## Standard Features

- Removable individual panels for easy access above the cabinets
- Heat activated design to shrink and drop away
- Sturdy aluminum frame
- Clear translucent panel
- Installation track and hardware
- Approved for use under fire suppression system

## Options

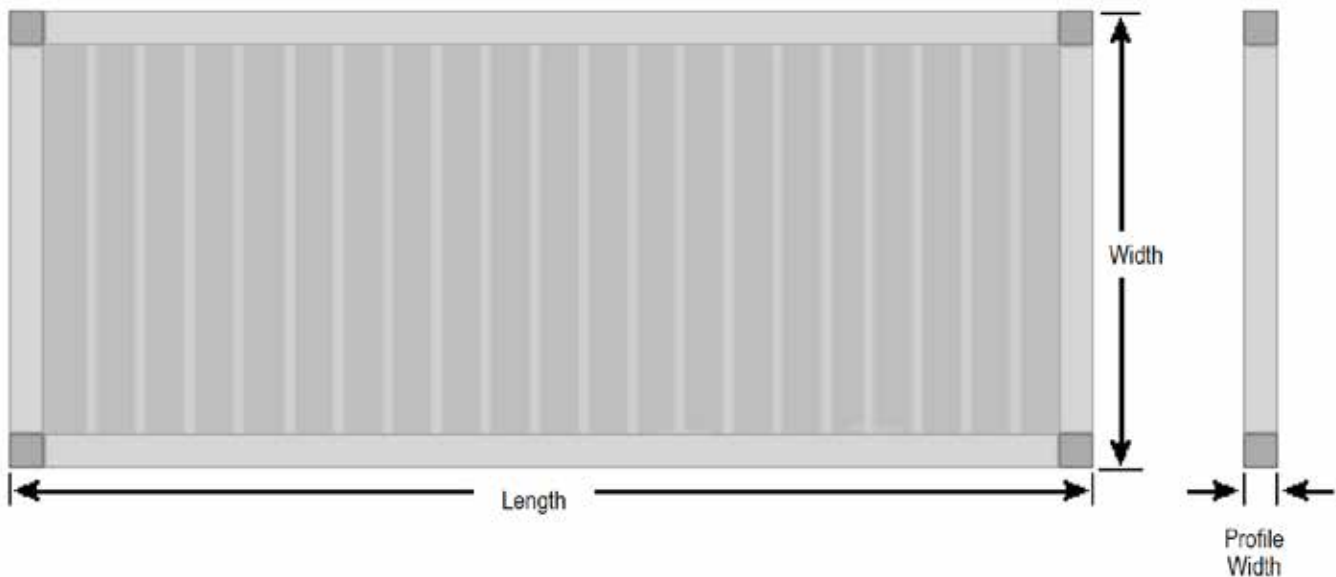
- Clear/Black anodize finish
- Custom powder coat finish
- Leveling kits for uneven cabinets



# Technical Data: Ceiling Panels Heat Activated

## Standard Specifications

Size		Panel Options	
Width	Up to 26"	Material	15 mil Clear Polyvinyl Chloride
Length	Up to 96"	Color	Clear
Profile Width	1"	Smoke Deviation	ASTM E84
<b>Door &amp; Frame</b>		Flame Spread ASTM E84	15 Test Result
Material	6560 T-6 Temper Aluminum	UL-R4036 and FM-4651 rated for use under 165 degree F. fire suppression systems	
Tensile Strength	30,000 psi		



### Measuring for Heat Activated Ceiling

#### Measurements Needed

- Total Aisle length
- Aisle width (Use widest point as measurement)
- Height of all cabinets, in-row cooling units or UPS systems in row (Leveling kits and Rigid Walls can be used to create even rows)
- Ceiling can overlap 1" to 6" onto top of cabinets
- Check for any obstructions above the cabinets around the inside edge of aisle