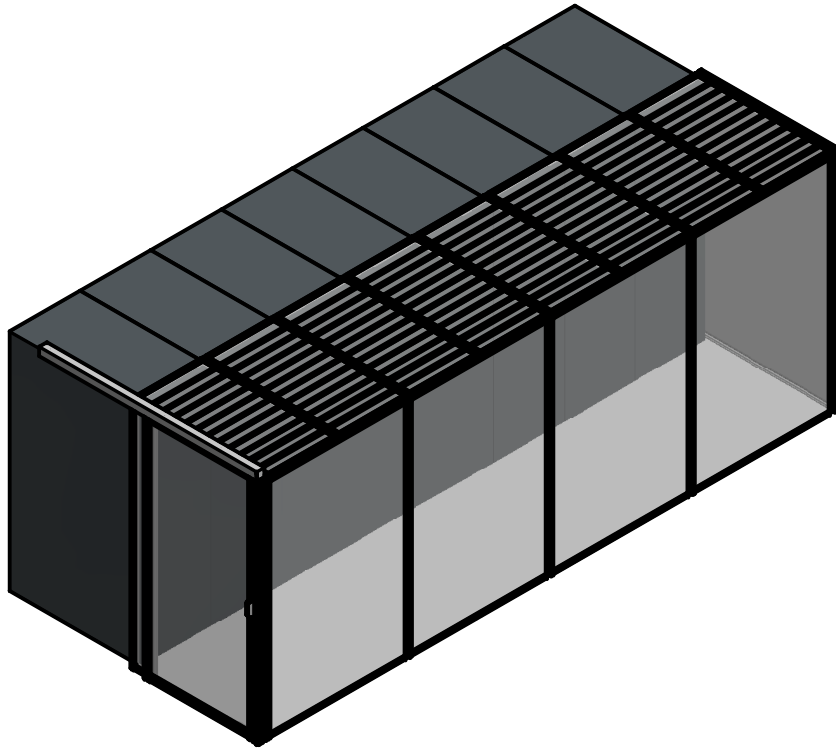
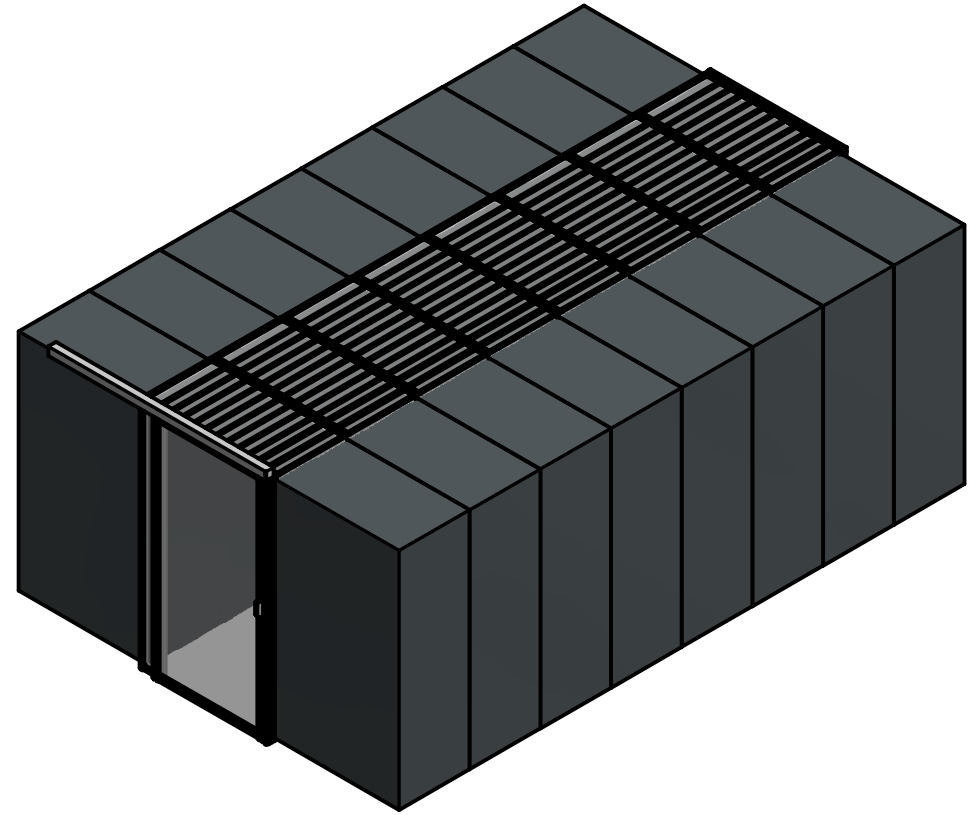


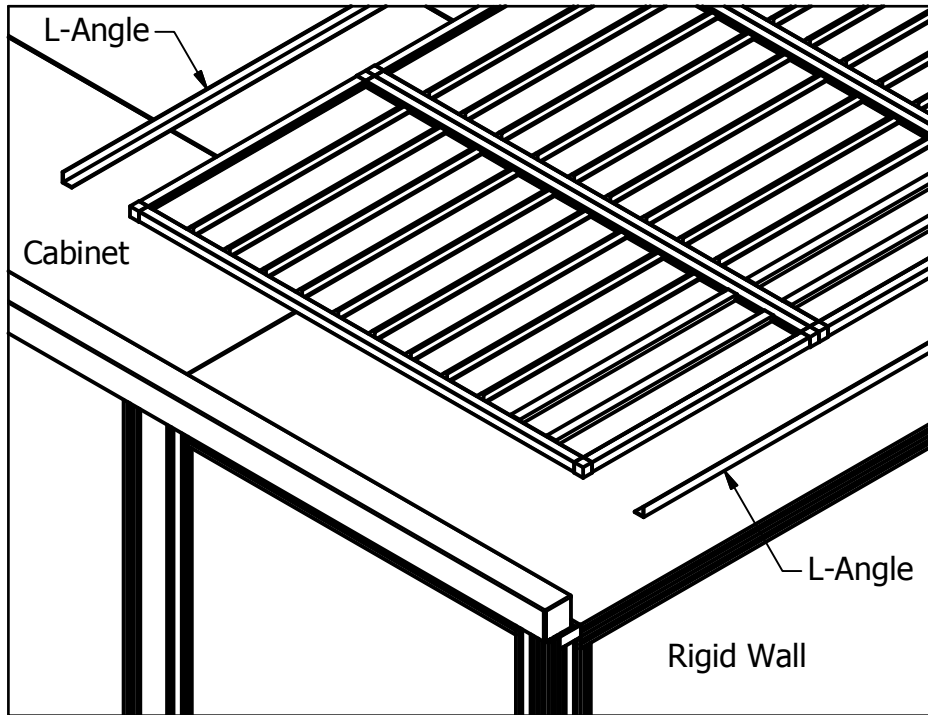
Ceiling Panel Installation Manual



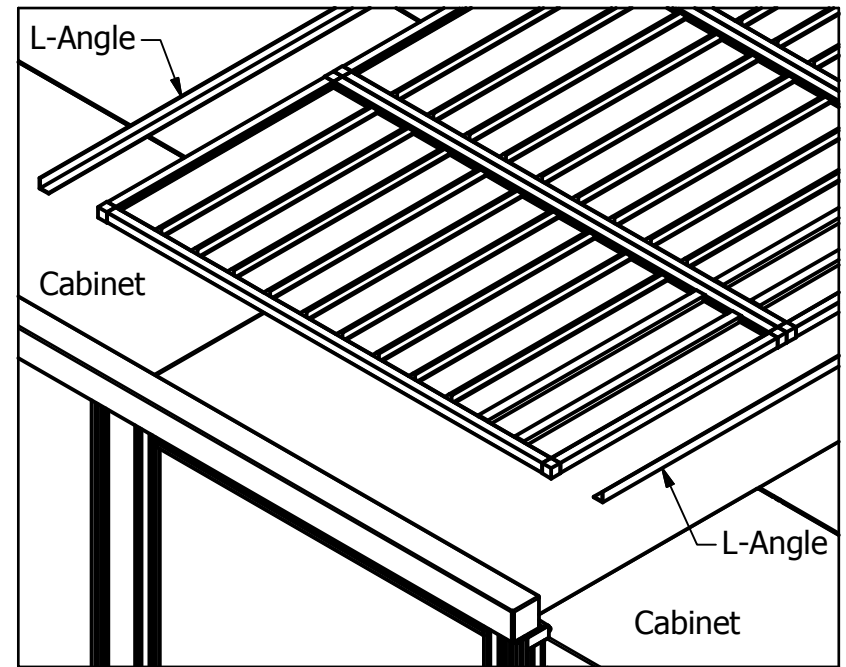
Rigid Wall View



Cabinet View

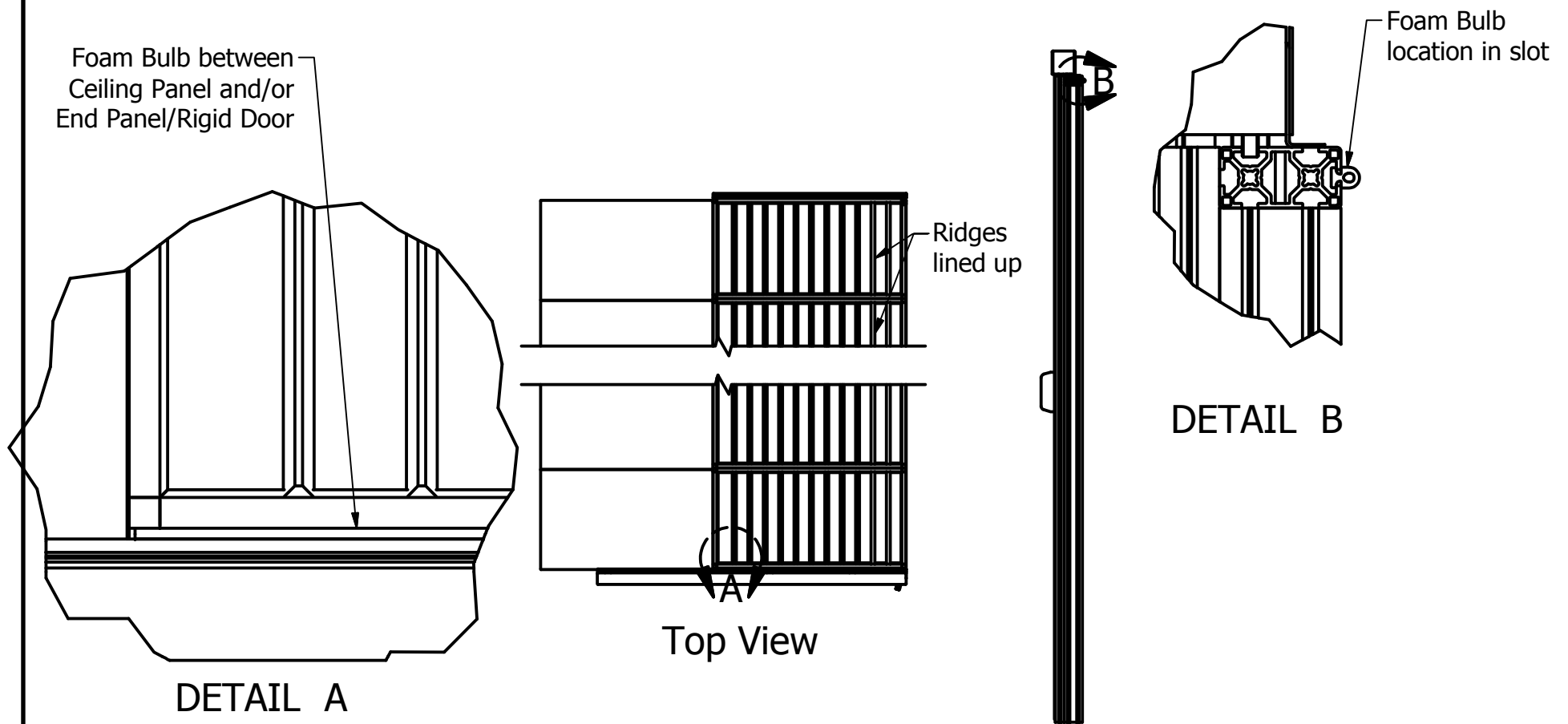


Rigid Wall View



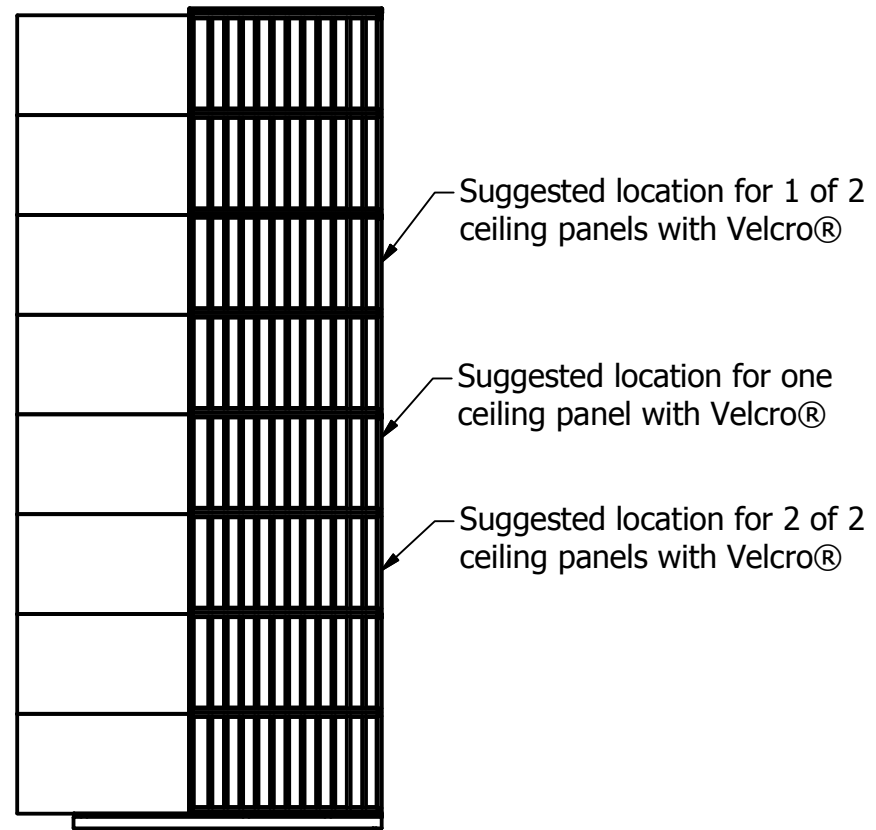
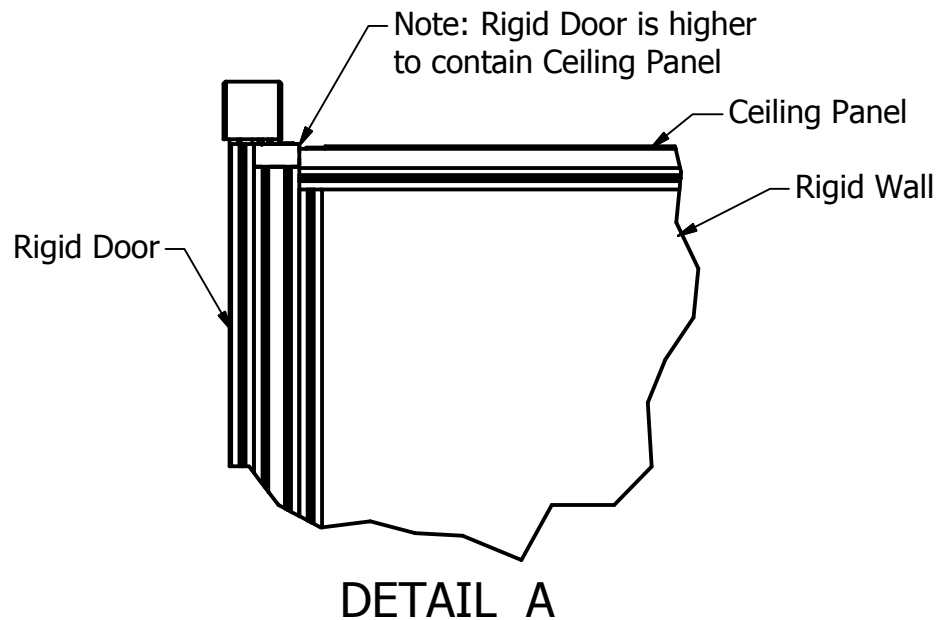
Cabinet View

- Make sure the L-angle's are evenly aligned, spaced and centered along the length of the aisle prior to removing backing on the double sided sticky tape or Velcro® so that the ceiling panels will fit between them with minimal gaps. The L-angles will be difficult to move, if double sided sticky tape is used, once secured to cabinets/rigid walls.
- For a rigid wall application, place one L-angle flush with edge of rigid wall and butt the end of the angle up to the end panel/rigid door (see rigid wall view above).
- For cabinet application, place the L-angle on the top of the cabinets and butt the end of the angle up to the end panel/rigid door (see cabinet view above).



If there is a small gap between the ceiling panels and the door/rigid wall, foam bulb can be used to fill the gap. If there is a gap of less than 1/2 inch then only one strip of foam bulb will be needed; otherwise, both strips foam bulb (one on each end panel/door) will be needed. Remove the end ceiling panel and press the foam bulb into the slot per detail B above in either of the end panel/doors and then replace the ceiling panel to ensure a snug fit.

*Note: When setting the ceiling panels in place make sure the ceiling panel ridges line up with each other. This will ensure an aesthetically pleasing installation the length of the aisle (flip the ceiling panels end for end if the ridges do not line up).



For applications with rigid walls, Velcro® has been placed on one or more ceiling panels depending on the length of the wall to hold the rigid walls securely in place. This allows for removal of the ceiling panel(s) for maintenance above the cabinets (ex. replacing light bulbs). During installation, remove the sticky tape from the Velcro® already attached to the ceiling panel(s) and place the ceiling panel(s) evenly spaced in the aisle. If more than one ceiling panel has Velcro®, then evenly space the ceiling panels in the aisle. This will help hold the rigid wall(s) straight and provide rigidity to the containment.