



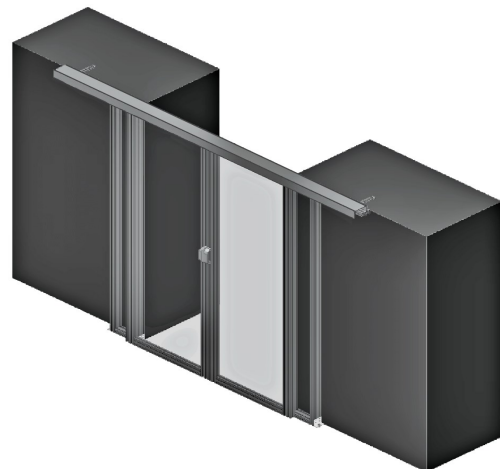
Auto Closing Double Sliding Door

Standard Features

- Ordered to size for precise fit
- Smooth operation under high air pressure
- No threshold design
- Soft close auto closing door
- Sturdy aluminum frame
- Hold-Open feature

Door Options

- Clear/Black Anodize
- Aluminum Handle
- Digital/key Lock
- Free Standing
- Custom Colors
- Other Customizations

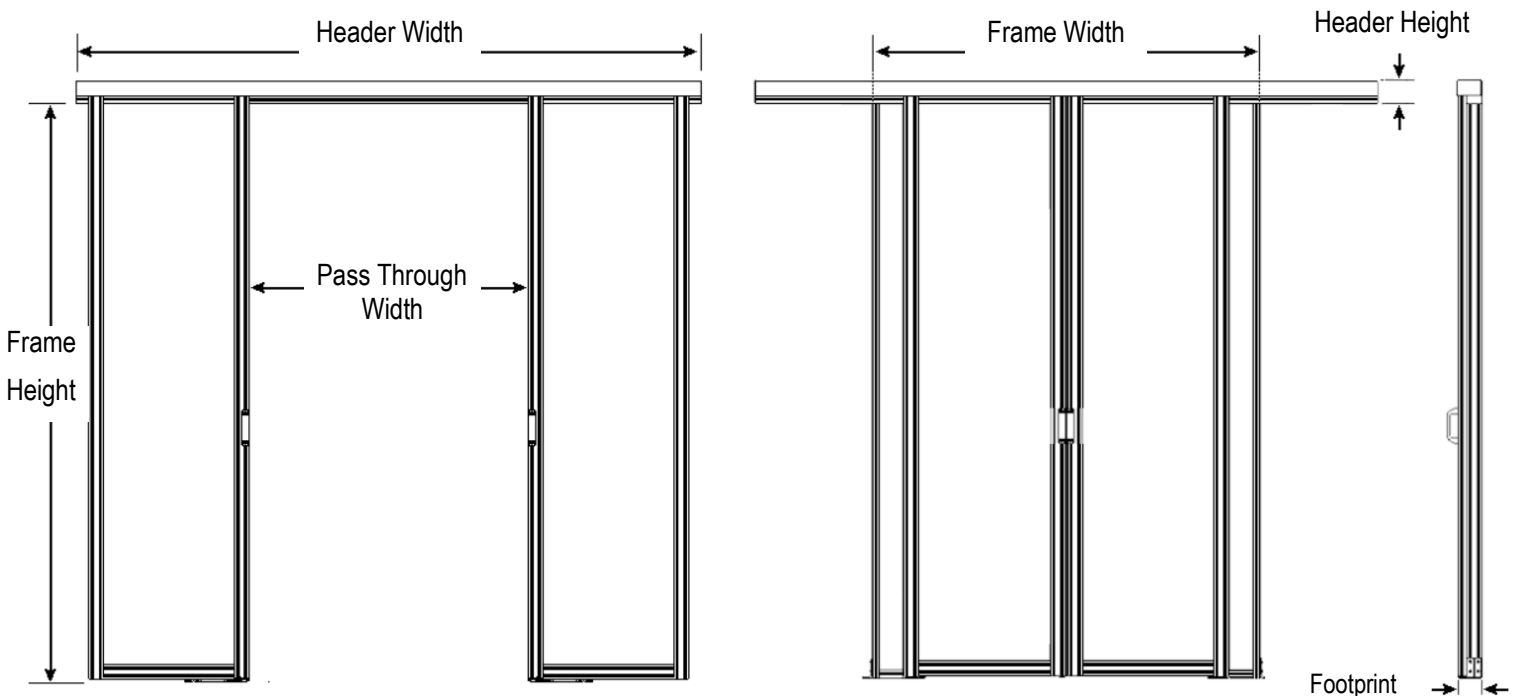


Technical Data: Double Sliding Door with Auto Closer

Standard Specifications

Size and Finish		Panel Options	Test	Result
Frame Height *	Up to 98"	3 mm Polycarbonate	ASTM E-84	Class B
Frame Width *	Up to 96"		ASTM D635	CC1
Header Width	96 ¹ / ₈ "		ASTM D2843	<75
Pass Through Width	39 ⁷ / ₈ "	4.5 mm Polycarbonate	UL 94	V-0
Footprint	3 ¹¹ / ₁₆ "		ASTM D635	CC1
Header Height	3 ⁵ / ₈ "		ASTM D2843	Passed
Total Door Height = Frame Height + Header Height		3 mm Clear PVC	FM 4910	Passed
Door & Frame			UL 94	V-0
Material	6560 T-6 Temper Aluminum		ASTM E-84	Class A
Tensile Strength	30,000 psi			

* Specify size when ordering



Measurements Needed

1. Frame Height - Measurement from ground to bottom of Header. Match Frame Height to height of cabinets. Door header will be positioned above the cabinets, ensure that there is clearance.
2. Frame Width - Measurement from frame edge to frame edge. Make Frame Width at least 2.5" wider than aisle width to ensure aisle is fully contained.