

AMCO[®]
ENCLOSURES
an IMS Engineered Products Brand

Auto Closing **Single Sliding Door**

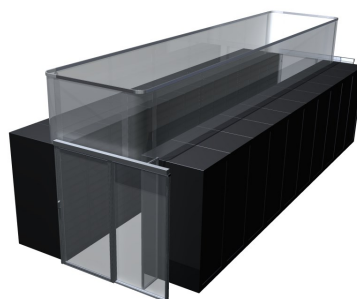
Standard Features

- Custom width for precise fit to most any opening
- No threshold design
- Soft close auto closing door
- Sturdy aluminum frame
- Door latch to hold door open
- Fire rated clear paneling
- Tight tolerances

Custom Options

- Digital lock
- Custom colors
- Aluminum handles
- Custom logo
- Corrugated paneling

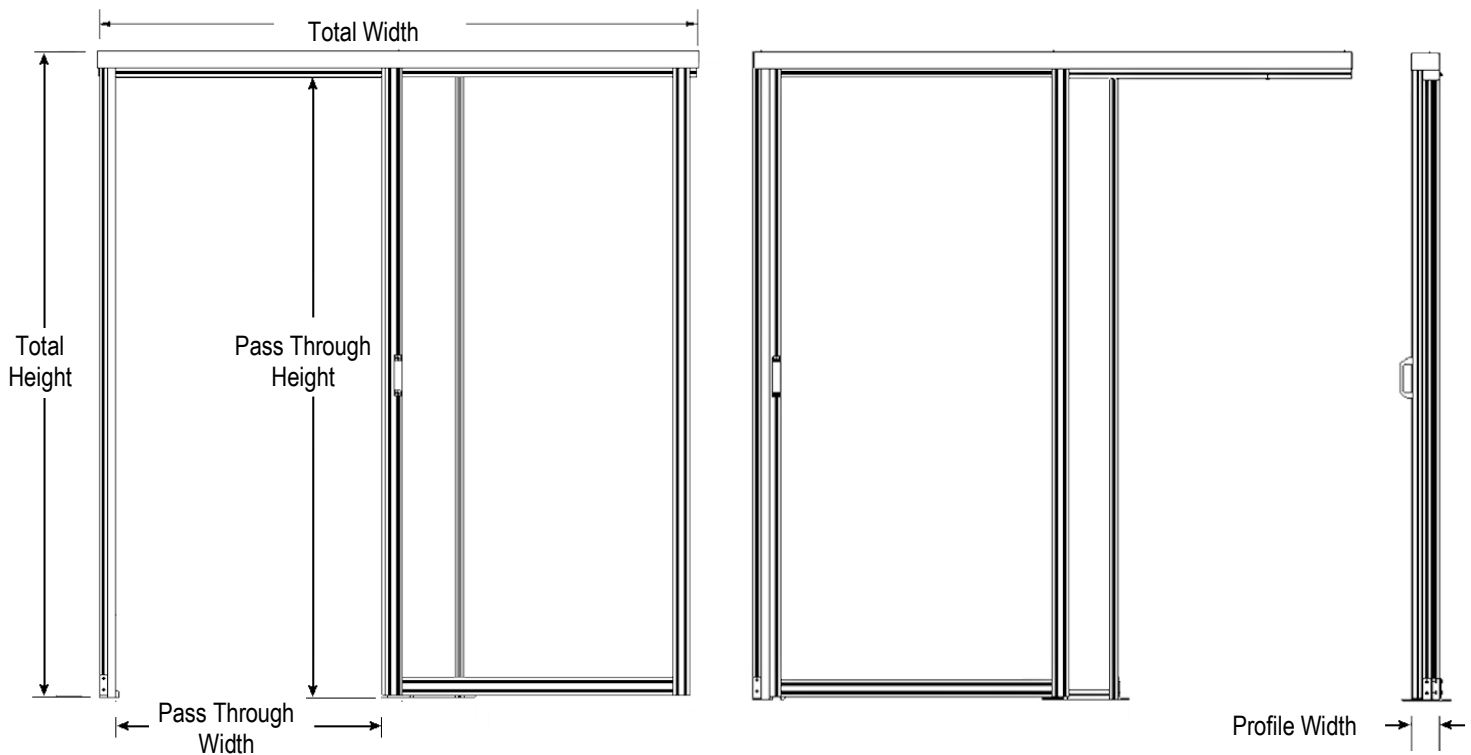
***Custom
designed and
built specific
to the
constraints
of the
installation***



Technical Data: Single Sliding Door with auto closer

Standard Specifications *

Size and Finish		Door & Frame	
Fits Aisle openings	38" to 90"	Material	6560 T-6 Temper Aluminum
Total Height	Up to 101 1/2"	Tensile Strength	30,000 psi
Pass Through Height	Up to 98"	Lexan (High Optic Polycarbonate)	
Total Width	Up to 96 1/8"	Material	Polycarbonate
Pass Through Width	34.75"	Thickness	4.5mm
Profile Width	3 11/16"	Self-ignition Temperature:	650°F (ASTM D1929)
Standard Finish	Satin Anodize (Clear)	Horizontal Burn Rate	ASTM D635
Upgrade Finish	Custom Anodize and Powder Coat Colors	Smoke Density	ASTM D2843
		Flammability	UL 94



Measuring for Rigid Containment

Measurements Needed for Rigid Doors

1. Aisle width (Distance from cabinet frame to cabinet frame or cabinet frame to wall)
2. Cabinet Height (finished cabinet height after being raised on levelers)

Typical Door Sizing

- Doors are typically built 1 3/16" taller than the cabinets, which allow the door to cap a hot or cold aisle ceiling system.
- Door side panels typically extend 2" to 8" past the cabinet opening (ex: For 48" aisle, the door width including side panels will be 56").
- Custom sized doors available upon request.