

**AMCO**<sup>TM</sup>  
**ENCLOSURES**  
an IMS Engineered Products Brand

# Double Pivot Door

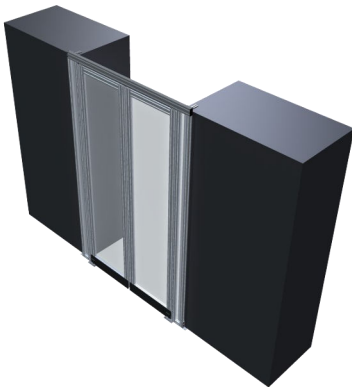
## Standard Features

- Custom width for precise fit to most any opening
- Double acting spring with adjustable tension
- Sturdy aluminum frame
- Doors hold open at 85°
- Fire rated clear paneling
- Tight tolerances

## Custom Options

- Solid bottom panel
- Cart bar
- Custom colors
- Aluminum handles
- Custom logo

*Custom  
designed and  
built specific  
to the  
constraints  
of the  
installation*



## Contact Info

847-391-8100

1 Innovation Drive  
Des Plaines, IL 60016

[sales@amcoenclosures.com](mailto:sales@amcoenclosures.com)  
[www.amcoenclosures.com](http://www.amcoenclosures.com)

# Technical Data

## Double Pivot Door



## Standard Specifications \*

Size and Finish	
Fits Aisle openings	48" to 95 <sup>5</sup> / <sub>8</sub> "
Total Height	Up to 98"
Pass Through Height	Up to 96 <sup>7</sup> / <sub>8</sub> "
Total Width	Up to 96"
Pass Through Width	39 <sup>7</sup> / <sub>8</sub> "
Profile Width	1 <sup>3</sup> / <sub>16</sub> "
Standard Finish	Satin Anodize (Clear)
Upgrade Finish	Custom Anodize and Powder Coat Colors
Door & Frame	
Material	6560 T-6 Temper Aluminum
Tensile Strength	30,000 psi
Paneling - Lexan (High Optic Polycarbonate)	
Material	Polycarbonate
Color	Clear
Odor	Odorless
Thickness	4.5 mm
Self-ignition Temperature:	650°F
Meets or exceeds ASTM E84	

\* Custom sized doors available upon request

