



SPARTAN Series

Assembled in the USA
www.amcoenclosures.com

IMS Engineered Products is
ISO9001 Certified

Spartan Overview

Spartan preconfigured enclosures ship completely assembled and offer a high quality, cost effective solution for mounting your IT components. With integrated cable management, split side panels and 70% perforated doors, AMCO's Spartan cabinets are a great solution for stand-alone cabinets or for large data center deployments.

Certified Load Rating

- 3,000 lb. static load rating

Spartan Features

- ROHS compliant and EIA 310-D
- Durable black powder coat finish
- Shipping in 1-2 business days
- 5 year warranty

Spartan Racks Include

- Doors
- Side panels
- Top panel
- Baseplate
- Casters and levelers
- Power panels
- Ground straps and ground studs
- Full range of additional accessories



RU Height	Part Number	Height	Width	Depth
47	DSF-47U-800-1200	86.61"	31.5"	50.00"
47	DSF-47U-600-1200	86.61"	23.62"	50.00"
47	DSF-47U-600-1000	86.61"	23.62"	42.12"
42	DSF-42U-600-1200	78.74"	23.62"	50.00"
42	DSF-42U-600-1000	78.74"	23.62"	42.12"

*Dimensions include front & rear doors



Standard Features

Front Door

Curved front door adds a contemporary look and is 70% open. The curved door is 2" in depth. The front door can be right or left hinged.

French Rear Door

French rear doors are 70% open, feature a 2 point latch, allow easy access to equipment and cabling and are 1.5" in depth.



Front

Rear

Side Panels

Spartan side panels are split to accommodate easy removal and installation. The side panels also feature a spring latch and lock as well as a ground stud on the interior.



Side Panels

Ground Stud

Each side panel includes one ground stud.



Side Panel Features

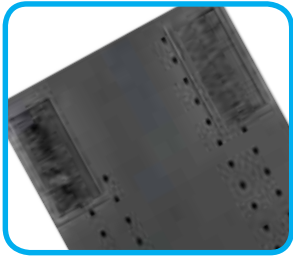


Keyed Lock Latch

Spartan side panels come with a locked latch for easy installation and removal while also keeping the side panel secure.



Standard Features



Top Panels

Top panels include a brushed cable egress port in each corner making cable entry and exit fast and simple.



Baseplate

Baseplates come standard on every Spartan rack and are easily removable when access is needed below the raised floor.



Casters/Levelers

Spartan cabinets come standard with casters for easy deployment. Heavy duty levelers are also included.



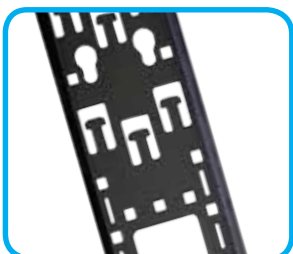
Joining Hardware

Spartan racks join together on the front and rear of the frame using a simple bracket and bolt that are included with the frame.



Channels

Mounting channels feature universal (square-hole) mounting, providing flexibility in metric/domestic hardware deployment. Channels have a black durable powder coat finish with RU markings.



Power Panels

Power panels are 4.5" in depth and allow for tool-less mounting of PDU's and can also be used for vertical cable management.



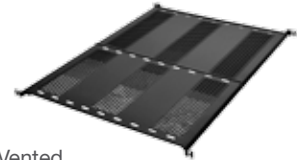
Additional Accessories

Heavy Duty Shelves

- 1.75"H (1RU), fit 19" width panel openings
- Depths of 17" up to 40"
- Available in solid or vented models
- Load-rated to support up to 300 lbs.
- Shelves mount to the front and rear of the mounting channels
- Standard finish is black powder coat



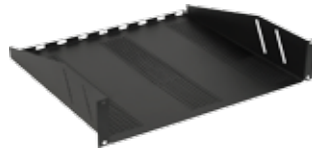
Solid
UA-SHAS-1725 (17"- 25")
UA-SHAS-2540 (25"- 40")



Vented
UA-SHAV-1725 (17"- 25")
UA-SHAV-2540 (25"- 40")

Light Duty Shelf

- Heights: 1RU, 2RU, 3RU, 4RU and 5RU
- 19" wide, 16" deep
- UA shelves are light duty and mount to the front of the mounting channel
- Standard finish is black powder coat



Vented
UA-SH1 (15 lb. load rating)
UA-SH2 (50 lb. load rating)
UA-SH3 (60 lb. load rating)
UA-SH4 (70 lb. load rating)
UA-SH5 (80 lb. load rating)



Drawer With Lock
UA-DR2-LK (30 lb. load rating)
UA-DR3-LK (40 lb. load rating)
UA-DR4-LK (50 lb. load rating)

Drawer with Lock

- 19" wide, 18" deep
- Features a keyed lock
- Mount to the front of the mounting channels
- Heights of 2RU, 3RU and 4RU
- Standard finish is black powder coat

Tool-less Blanking Panels

- Tool-less
- Cover empty spaces in panel openings
- Optimize air circulation



Steel Blanking Panels



Co-Poly Blanking Panels
(with 6 ea. 1RU panels)
Square hole only

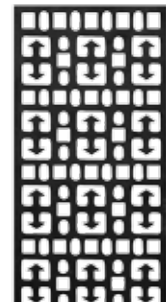
Adjustable Chassis Guides

- 2" H x 2" W profile
- Fully adjustable from 25" thru 36"
- Flanges support component-mounted hardware in a minimal profile
- Chassis guides support 125 lbs.
- Standard finish is black powder coat



CHGA-TN-2536-D
(25" to 36" Depths)

Vertical Cable Management



Cable Lacing Strip

Horizontal Cable Management

- 2RU panel height (3.50")
- 10 ga. steel construction
- Available in 4" and 7" depths



HCM4 - 4" Depth
HCM7- 7" Depth

Hardware



M6
HKM6-25



Dzus M6
HKDZ-25



Cable Ring Kit
HK-CR1
Bag of 10 pcs



10-32 Hardware Kit
HKEP1032-25



Joining Kit
HK-R-TN



Warranty & Policies

A. Choice of Method of Shipment

Unless otherwise specified, AMCO Enclosures are shipped as individual modules per ISTA packaging certification, with single width components assembled on the frame. Upon request, console arrangements will be completely assembled at the factory and shipped like furniture, via van, at no additional charge for assembly. Console arrangements may also be crated for shipment. Crating charges will be quoted for each such order, as console arrangements vary.

B. Design Changes

To allow continued progress, improvement, and adaptability in an advancing industry, AMCO Enclosures reserves the right to make product changes as deemed necessary.

C. Price Discounts

Purchase orders cannot be combined for discount advantages.

D. Proprietary Rights

This catalog and the drawings therein contain information deemed proprietary to AMCO Enclosures and are to be used only for the purposes for which they are submitted and, further, shall not be copied in whole or in part without the prior written consent of AMCO Enclosures.

E. Cancellation and Return

Cancellation and return charges begin at 40% with a minimum of \$50.00, depending on the nature of the order and the extent to which it has been processed. All returns have a 30-day, upon receipt time limit. Returns must be freight prepaid and not made without the prior written approval of AMCO Enclosures.

F. Terms

All quotations, order confirmations, published prices and discounts based on delivery F.O.B. AMCO Enclosures, 1 Innovation Drive, Des Plaines, IL 60016 freight collect. Invoice payment terms-net 30 days.

G. Sales Representation

Experienced factory sales representatives are available in all principle cities of the U.S.A., Canada and Mexico. Ask for sales representative listing. AMCO Enclosures equipment is thoroughly inspected prior to shipment. No returns of damaged equipment will be accepted without prior written approval of AMCO Enclosures.

Limited Warranty

AMCO Enclosures will repair or replace enclosures, accessories and components manufactured by AMCO Enclosures that are proven to be defective in material or factory workmanship under normal use during the period of this warranty.

Warranty Period

5 years from date of purchase. (Non-transferable)

This warranty does not cover:

- Failure in whole or part resulting from misuse, alteration, excessive temperature, excessive humidity, corrosive environment or lack of maintenance.
- Any materials or components used or manufactured pursuant to the purchaser's specifications.
- Items ordered in error or not required.

Power/Accessories

Warranty as specified by manufacturer.

Warranty Repair

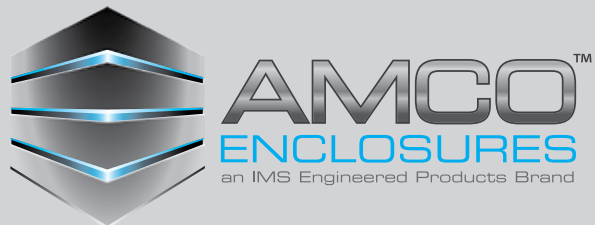
Purchaser shall obtain controlled authorization number before returning any items alleged to be defective to AMCO Enclosures.

Inspection

AMCO Enclosures shall have the right to inspect any and all allegedly defective items on-site at purchaser's convenience.

Disclaimer of Consequential Damages and Limitations of Implied Warranty

AMCO Enclosures disclaims any responsibility for loss of time or use of parts or equipment wherein AMCO Enclosures components, or accessories are used. This includes any transportation, other incidental or consequential damages. Any implied warranties including the implied warranty of merchantability and fitness for intended use are limited to the duration of this written warranty.



1 Innovation Drive
Des Plaines, IL 60016
www.amcoenclosures.com
847-391-8100

IMS Engineered Products is

ISO9001 Certified